



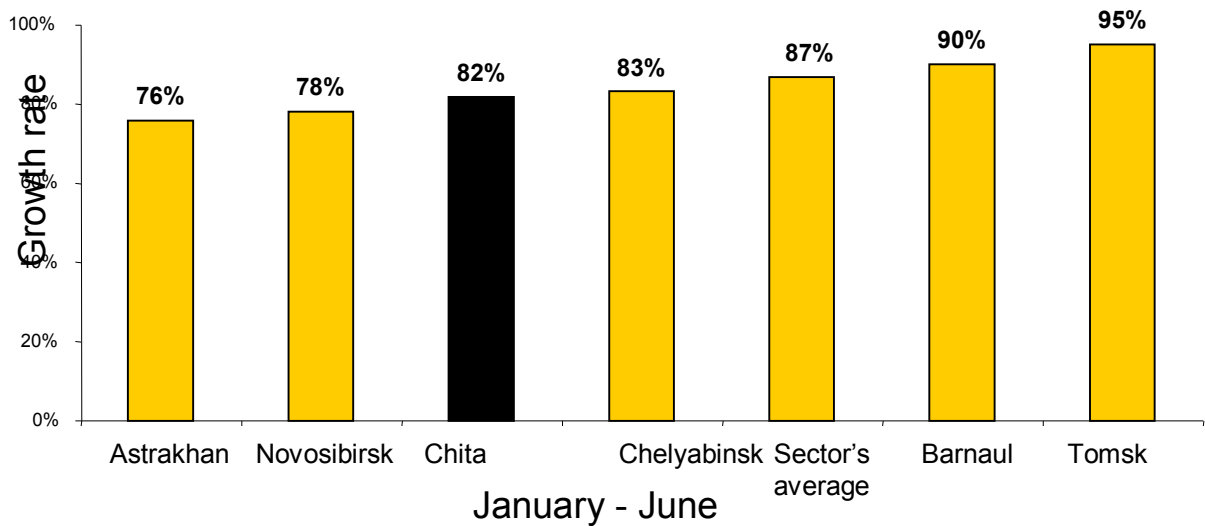
The Novoport company's financial and production activities (2009 half-year)



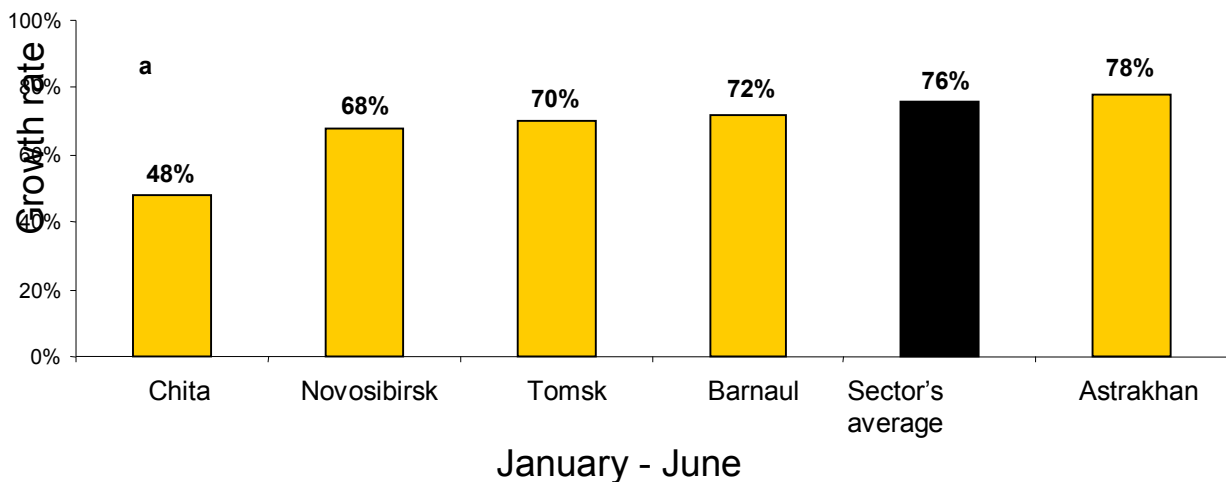
Production performance (2009 half-year)

Name	Sum total		Average	Novosibirsk	Chelyabinsk	Tomsk	Barnaul	Chit a	Astrakhan
	Actual	2009/2008							
Departures	10791	81%	-	81%	71%	86%	106%	73%	82%
Total take-off mass	683	76%	-	75%	69%	85%	96%	71%	81%
Passenger traffic	1355	81%	82%	78%	76%	87%	90%	83%	95%
Cargo and post	9591	68%	76%	68%	-	70%	72%	48%	78%
Maintenance	98425	88%	-	80%	73%	-	98%	-	202%
Fuel implementation	43041	74%	-	74%	-	-	82%	-	58%
Average hotel fillability	24%	49%	-	-	47%	-	83%	32%	36%

The growth rates comparative analysis



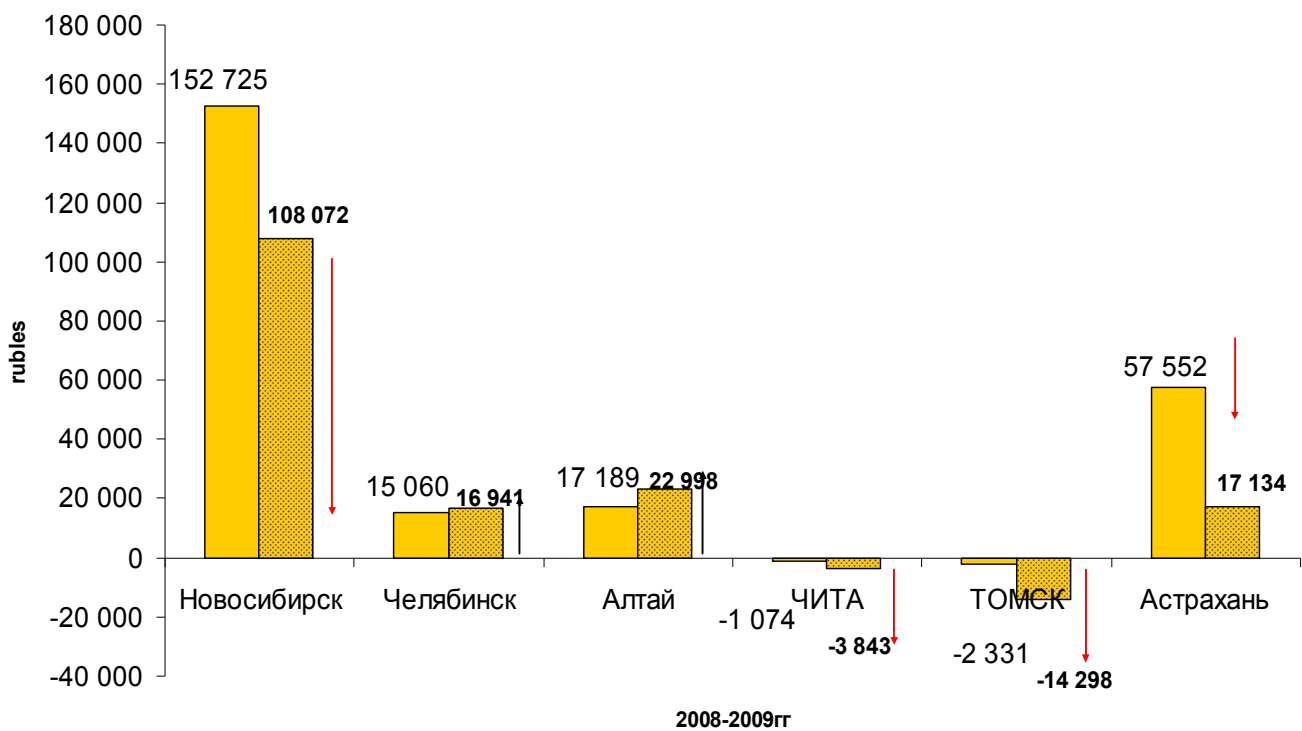
Comparative analysis of cargo traffic's growth rates



Financial performance (2009 half-year)

Name	Sum total		Novosibirsk	Chelyabinsk	Barnaul	Chita	Tomsk	Astrakhan
Gain	1924688	74%	1172882	189805	259141	55613	86831	160416
EBITDA	147004	61%	108072	16941	22998	-3843	-14298	17134
Net profit	-27761	-	-52294	737	7573	-6347	-7949	30519
Corporate dept	1856327	111%	1433452	138881	77604	33630	113638	59122

EBITDA dynamics



1. The passenger traffic decrease occurred in all directions. The main part falls on Moscow.
2. New international routes were opened at Tolmachevo airport. That are: Denpasar (charter), Osh, Ust-Kamenogorsk. And several internal routes: Noyabrsk, Salekhard, Ulan-Ude. On the 2 quarter of 2009 flights to Sharm-El-Sheyh (“Orenburg airlines”), Almaty (“Sibir”), Astana (“AirAstana”) and Antalya («Pegasus Airlines») were carried out.
3. “Moskoviya’s” leaving led to passenger’s traffic decrease in Barnaul airport. “UTair” had come which led to everyday flights to Moscow and Surgut.
4. “Dauria’s”, “KraAir’s” and “VimAvia’s” leaving led to passenger’s traffic decrease in Chita airport. Hotel fillability reduced because it’s main guests were crews.
5. “Krasair” and “Alrosa” left Tomsk airport. “Transaero” had come.
6. “Sibir’s”, “Havaulary’s”, “Aeroflot’s” , “KD Avia’s” flight reduction and “Aviaprad’s” and “BimAvia’s” leaving lead to passenger’s traffic decrease in Chelyabinsk airport.